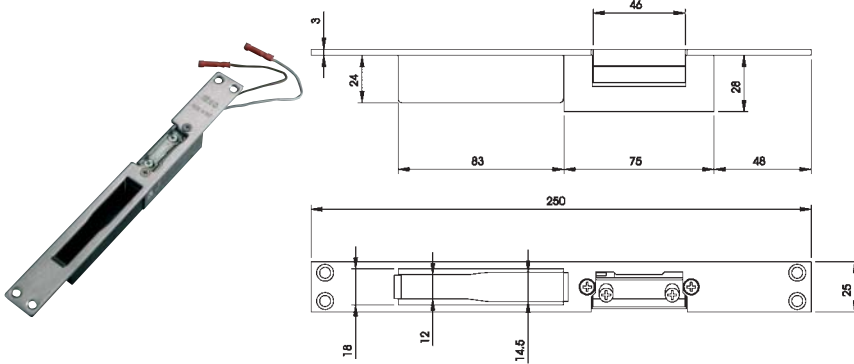




**Electric
strikers**

Code
 Status
 Single package
 Multiple package
 Min. ord.

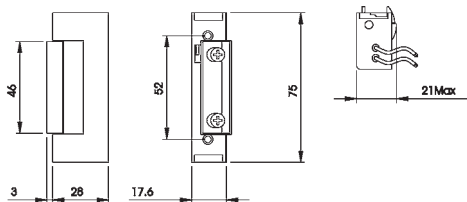
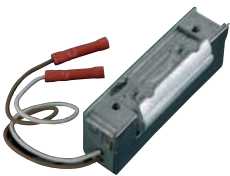
Match Radiale



* DC: max. power supply time
 10 seconds

Electric striker with closed **REVERSIBLE** striking plate, satin **STAINLESS STEEL**, flat forend mm. **250X25X3**, for locks 78*-96*7-96*9-98. Can be used with electric strikers series 0400*0 and 0401*0. **AUTOMATIC-UNLATCHING VERSION AFTER ELECTRIC PULSE**, with hold-open lever. Voltage: **6-12V. AC/DC*** Absorption: da 0,5 a 1,5 A. with nylon case

5661900 A 1 6 1



* DC: max. power supply time
 10 seconds

Electric striker without forend, **UNLATCHED AFTER ELECTRIC PULSE ONLY**, with hold-open lever. Voltage: **6-12V. AC/DC*** Absorption: 0,5 to 1,5 A. **REVERSIBLE**.

040010 C 1 6 6

Voltage: **24V. AC/DC*** Absorption: 0,5 A. **REVERSIBLE**

040050 D 1 6 6

Electric striker without forend, **UNLATCHED AFTER ELECTRIC PULSE ONLY**, without hold-open lever. Voltage: **6-12V. AC/DC*** Absorption: 0,5 to 1,5 A. **REVERSIBLE**

040020 D 1 6 6

Voltage: **24V. AC/DC*** Absorption: 0,5 A. **REVERSIBLE**

040060 D 1 6 6

Electric striker without forend, **PERMANENT UNLATCHING AFTER ELECTRIC PULSE** with hold-open lever. Voltage: **6-12V. AC/DC*** Absorption: 0,5 to 1,5 A. **REVERSIBLE**

040030 A 1 6 6

Voltage: **24V. AC/DC*** Absorption: 0,5 A. **REVERSIBLE**

040070 C 1 6 6

Electric striker without forend, **PERMANENT UNLATCHING AFTER ELECTRIC PULSE**, without hold-open lever.

Voltage: **6-12V. AC/DC*** Absorption: 0,5 to 1,5 A. **REVERSIBLE**

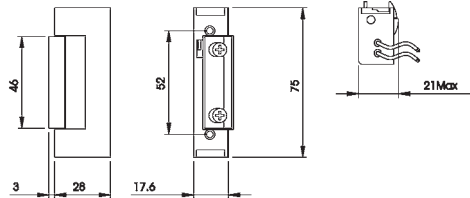
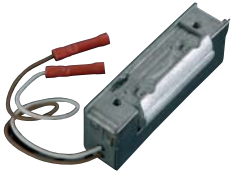
040040 B 1 6 6

Voltage: **24V. AC/DC*** Absorption: 0,5 A. **REVERSIBLE**

040080 D 1 6 6

Code
 Multiple package
 Single package
 Status
 Min. ord.

Match Radiale



Electric striker without forend, **FAIL-SAFE VERSION**.

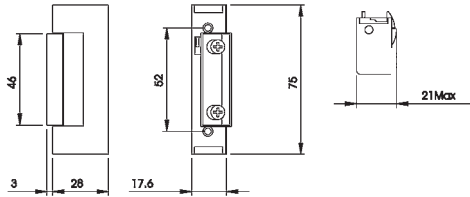
Without hold-open lever.

Voltage: 12V. DC Absorption: 0,3A. **REVERSIBLE**

040100 C 1 6 6

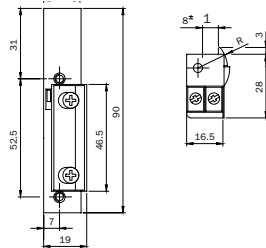
Voltage: 24V. DC Absorption: 0,2A. **REVERSIBLE**

040110 D 1 6 6



MECHANICAL striker without forend, version **WITHOUT COIL** with hold-open lever. **REVERSIBLE**.

040090 C 1 6 6

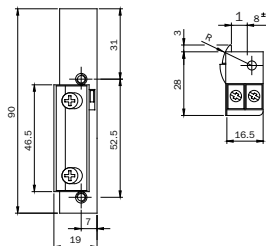


ADJUSTABLE RIGHT-HAND electric striker for "MULTIBLINDO" central striking plates

series 033160-033162-033173-033175. **LIMITED UNLATCHING DURING ELECTRIC PULSE ONLY.**

Hold-open lever. Voltage: **12V AC 15W**

040900 B 1 10 10



ADJUSTABLE LEFT-HAND electric striker for "MULTIBLINDO" central striking plates

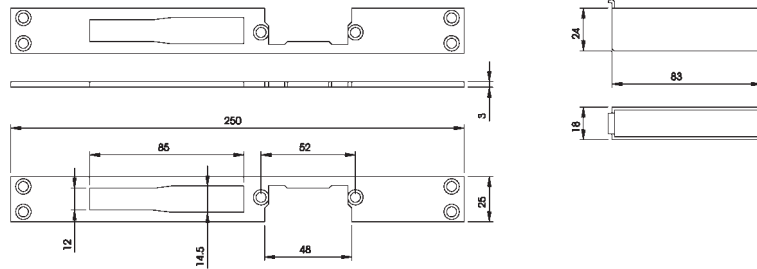
series 033161-033163-033174-033176. **LIMITED UNLATCHING DURING ELECTRIC PULSE ONLY.**

Hold-open lever. Voltage: **12V AC 15W**

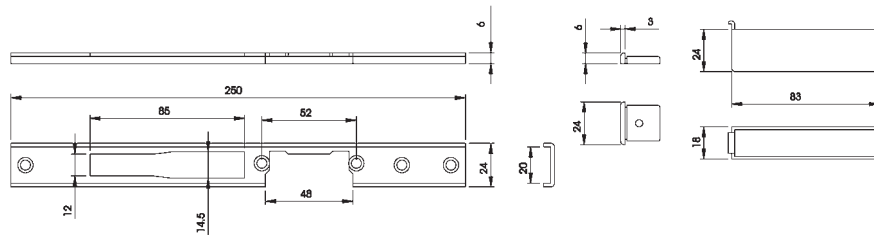
040910 B 1 10 10

Code
 Status
 Single package
 Multiple package
 Min. ord.

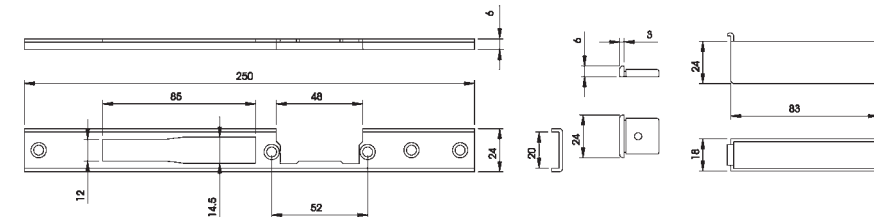
Match Radiale



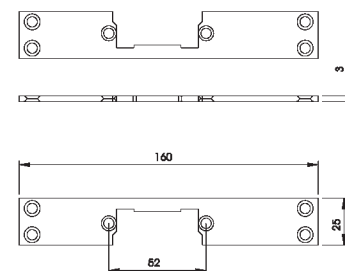
Closed **REVERSIBLE** striking plate, satin **STAINLESS STEEL**, U-forend mm. **250x25x3**, for locks 78*-96*7-96*9-98. Can be used with electric strikers series 0400*0 and 0401*0. With nylon case. **033190** B 1 10 10



Closed **RIGHT-HAND** striking plate, satin **STAINLESS STEEL**, U-forend mm. **250x24x6**, for locks 78*-96*7-96*9-98. Can be used with electric strikers series 0400*0 and 0401*0. With nylon caps and case. **033194** C 1 10 10



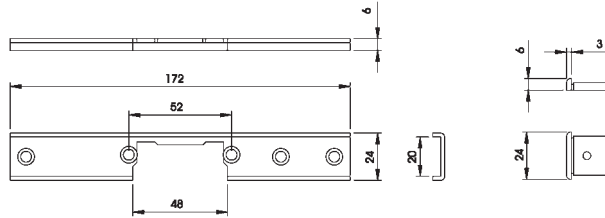
Closed **LEFT-HAND** striking plate, satin **stainless steel**, U-forend mm. **250x24x6**, for locks 78*-96*7-96*9-98. Can be used with electric strikers series 0400*0 and 0401*0. With nylon caps and case. **033195** C 1 10 10



REVERSIBLE striking plate in satin **stainless steel**, flat forend mm. **160x25x3**, for locks with deadbolt only. Can be used with electric strikers series 0400*0 and 0401*0. **033196** B 1 10 10

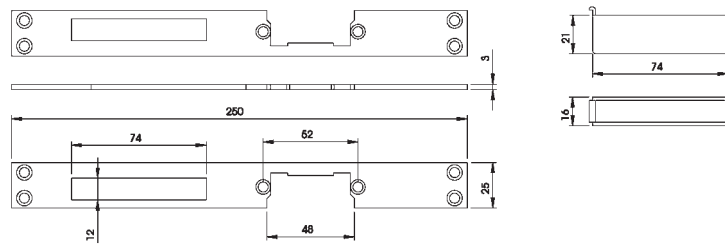
Code
 Status
 Single package
 Multiple package
 Min. ord.

Match Radiale



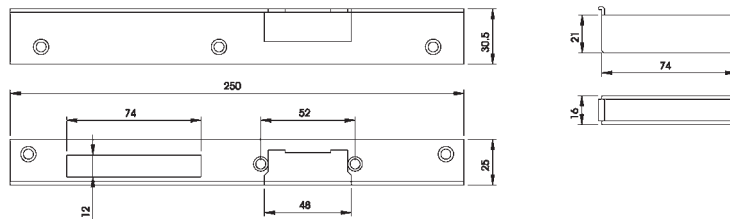
REVERSIBLE striking plate in satin **stainless steel**, U-forend mm. **172x24x6**,
 for locks with deadbolt only. Can be used with electric strikers series 0400*0 and 0401*0. With cap.

033197 D 1 10 10



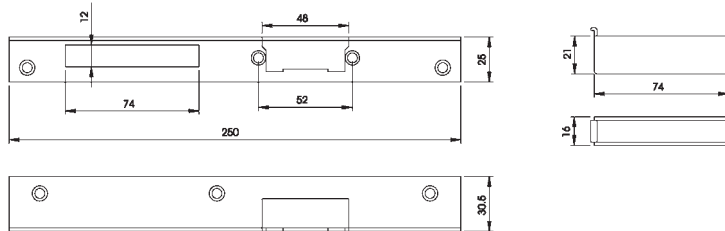
REVERSIBLE closed striking plate in satin **stainless steel**, flat forend mm. **250x25x3**,
 for mortice locks for wooden frames series 200-205-210-215-221-240-250-741-291.
 Can be used with electric strikers series 0400*0 and 0401*0. With nylon case.

033193 C 1 10 10



RIGHT-HAND closed angle striking plate, **GOLD PAINTED** steel mm. **250x30,5x25**,
 for mortice locks for wooden frames series 200-205-210-215-221-240-250-741-291.
 Can be used with electric strikers series 0400*0 and 0401*0. With nylon case.

033191 C 1 10 10

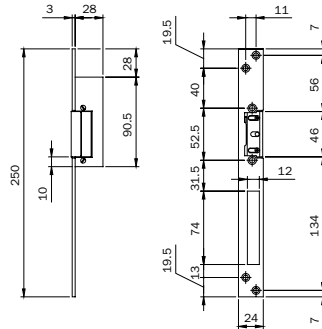


LEFT-HAND closed angle striking plate, **GOLD PAINTED** steel mm. **250x30,5x25**,
 for mortice locks for wooden frames series 200-205-210-215-221-240-250-741-291.
 Can be used with electric strikers series 0400*0 and 0401*0. With nylon case.

033192 D 1 10 10

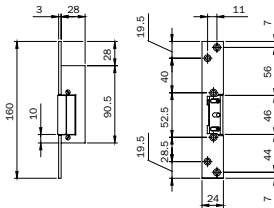
Code
 Status
 Single package
 Multiple package
 Min. ord.

Match for metal frames



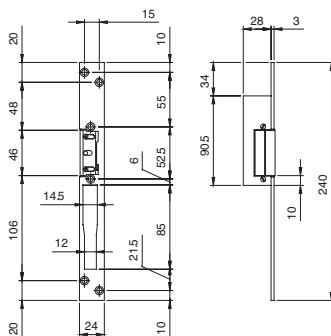
Electric striker with flat forend, **STAINLESS STEEL** mm. **250x24x3**, **RIGHT- OR LEFT-HAND USE**, for mortice locks with translating latchbolt and deadbolt for aluminium frames, **PERMANENT UNLATCHING AFTER ELECTRIC PULSE**, with hold-open lever pin for automatic function. Voltage: **12V AC 15W**

5621830 B 1 10 10



Electric striker with flat forend, **STAINLESS STEEL** mm. **160x24x3**, **RIGHT- OR LEFT-HAND USE**, for mortice locks for aluminium frames, **PERMANENT UNLATCHING AFTER ELECTRIC PULSE** with hold-open lever, pin for automatic function. Voltage: **12V AC 15W**

5611830 B 1 10 10



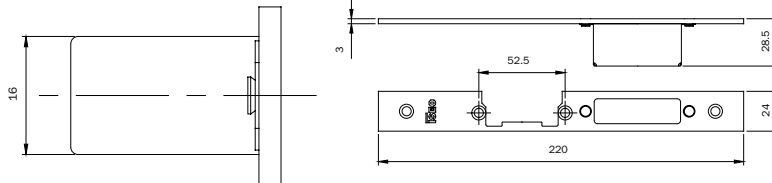
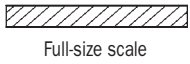
Electric striker with flat forend, **STAINLESS STEEL** mm. **240x24x3**, for mortice locks with tilting deadbolt and latchbolt for aluminium frames. Can be used on: **FRAMES WITH INTERNAL RIGHT-HAND LOCK, RAIL FRAMES WITH LEFT-HAND INTERNAL LOCK, PERMANENT UNLATCHING AFTER ELECTRIC PULSE**, with hold-open lever, pin for automatic function. Power supply **12V. AC 15W.**

5651830 B 1 10 10

Electric striker with flat forend, **STAINLESS STEEL** mm. **240x24x3**, for mortice locks with tilting deadbolt and latchbolt for aluminium frames. Can be used on: **FRAMES WITH INTERNAL LEFT-HAND LOCK, RAIL FRAMES WITH RIGHT-HAND INTERNAL LOCK, PERMANENT UNLATCHING AFTER ELECTRIC PULSE**, with hold-open lever, pin for automatic function. Power supply **12V. AC 15W.**

5661830 B 1 10 10

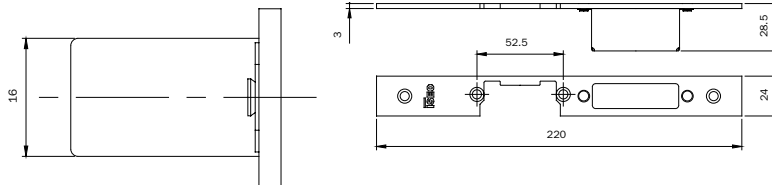
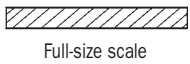
Match for metal frames



RIGHT-HAND striking plate for "MULTIBLINDO" central lock.

Flat forend mm. **220x24x3** in **STAINLESS STEEL**. Can be used with striker series: 040890, 040900, 040910, 0400*0 e 0401*0. With case.

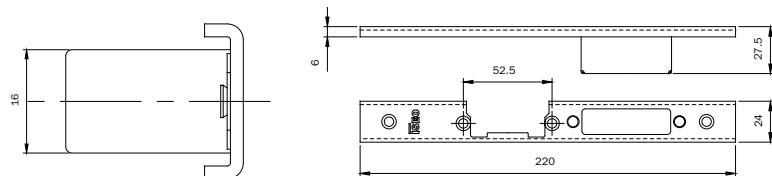
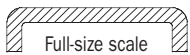
033160 B 1 10 10



LEFT-HAND striking plate for "MULTIBLINDO" central lock.

Flat forend mm. **220x24x3** in **STAINLESS STEEL**. Can be used with striker series: 040890, 040900, 040910, 0400*0 e 0401*0. With case.

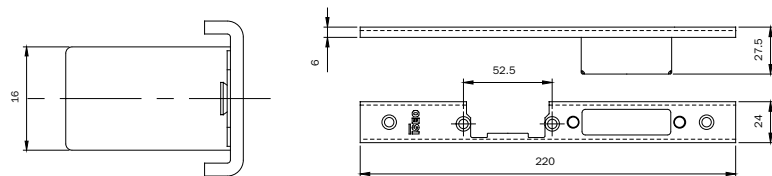
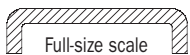
033161 B 1 10 10



RIGHT-HAND striking plate for "MULTIBLINDO" central lock.

U-forend mm. **220x24x6** in **STAINLESS STEEL**. Can be used with striker series: 040890, 040900, 040910, 0400*0 e 0401*0. With caps and case.

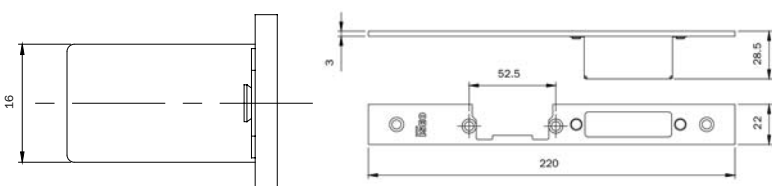
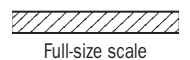
033162 B 1 10 10



LEFT-HAND striking plate for "MULTIBLINDO" central lock.

U-forend mm. **220x24x6** in **STAINLESS STEEL**. Can be used with striker series: 040890, 040900, 040910, 0400*0 and 0401*0. With capas and case.

033163 B 1 10 10



RIGHT-HAND striking plate for "MULTIBLINDO" central lock.

Flat forend mm. **220x22x3** in **STAINLESS STEEL**. Can be used with strikers series: 040890, 040900, 040910, 0400*0 and 0401*0. With case.

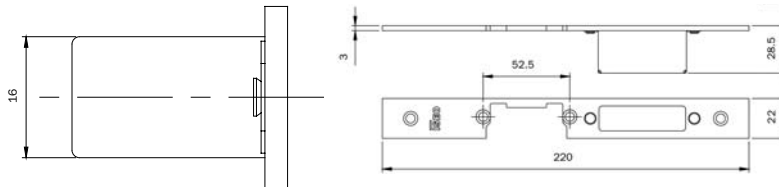
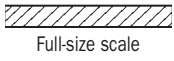
033173 D 1 10 10

Code

Multiple
package
Single
package
Status

Min. ord.

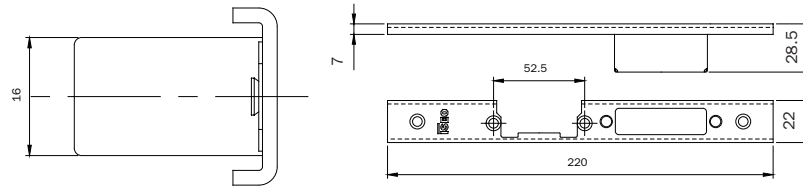
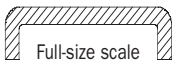
Match for metal frames



LEFT-HAND striking plate for "MULTIBLINDO" central lock.

Flat forend mm. **220x22x3** in **STAINLESS STEEL**. Can be used with strikers series: 040890, 040900, 040910, 0400*0 e 0401*0. With case.

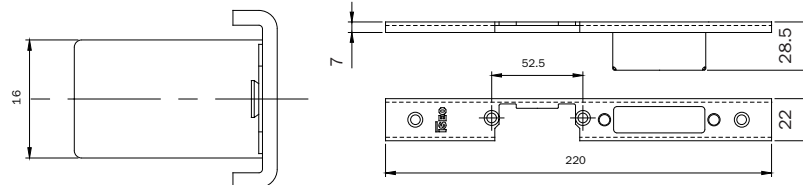
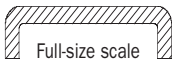
033174 D 1 10 10



RIGHT-HAND striking plate for "MULTIBLINDO" central lock.

U-forend mm. **220x22x7** in **STAINLESS STEEL**. Can be used with strikers series: 040890, 040900, 040910, 0400*0 and 0401*0. With caps and case.

033175 D 1 10 10



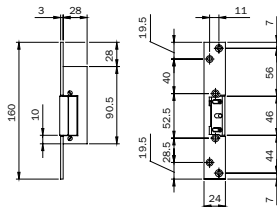
LEFT-HAND striking plate for "MULTIBLINDO" central lock.

U-forend mm. **220x22x7** in **STAINLESS STEEL**. Can be used with strikers series: 040890, 040900, 040910, 0400*0 and 0401*0. With caps and case.

033176 D 1 10 10

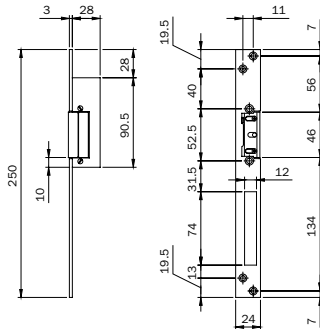
Code
 Multiple package
 Single package
 Status
 Min. ord.

Match for wooden frames



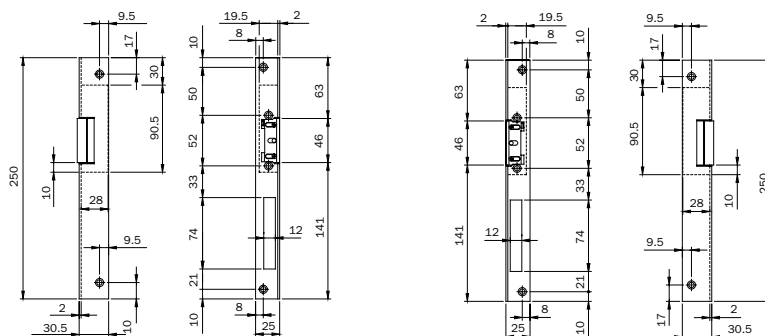
Electric striker with flat forend, **PAINTED GOLD** mm. **160x24x3**, **RIGHT- OR LEFT-HAND USE**, for mortice locks for wooden frames, **PERMANENT UNLATCHING AFTER ELECTRIC PULSE**, with hold-open lever, pin for automatic function. Power supply **12V. AC 15W**.

5611850 D 1 10 10



Electric striker with flat forend, **PAINTED GOLD** mm. **250x24x3**, **RIGHT- OR LEFT-HAND USE**, for mortice locks with translating deadbolt and latchbolt for wooden frames, **PERMANENT UNLATCHING AFTER ELECTRIC PULSE**, hold-open lever, pin for automatic function. Power supply **12V. AC 15W**.

5621850 B 1 10 10



Electric striker with angle forend, **GOLD PAINTED**, mm. **250x30,5x25**, for mortice locks for mortice locks with translating deadbolt and latchbolt for wooden frames, **USED FOR INTERNAL RIGHT-HAND DOOR**, **PERMANENT UNLATCHING AFTER ELECTRIC PULSE**, hold-open device, pin for automatic function. Power supply **12V. AC 15W**.

5631850 C 1 10 10

Electric striker with angle forend, **GOLD PAINTED**, mm. **250x30,5x25**, for mortice locks for mortice locks with translating deadbolt and latchbolt for wooden frames, **USED FOR INTERNAL LEFT-HAND DOOR**, **PERMANENT UNLATCHING AFTER ELECTRIC PULSE**, hold-open device, pin for automatic function. Power supply **12V. AC 15W**.

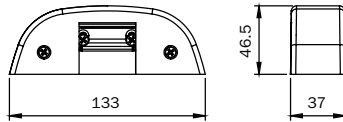
5641850 C 1 10 10

Code
 Status
 Single package
 Multiple package
 Min. ord.

Match for panic exit devices



* DC: Maximum power supply time 10 seconds



Electric striker for panic exit devices "BASE and PUSH". **OPENING WITH PERMANENT RELEASE** by electric pulse. Suitable for PVC, wooden and aluminium frames, both coplanar and with rebate up to 24 mm. Not suitable for fire doors.

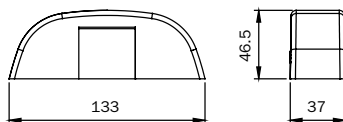
Power supply **12V. AC 15W.**

Painted black	5680000	A	1	-	1
Painted grey	5680003	D	1	-	1
Painted white	5680004	D	1	-	1

Electric striker for panic exit devices "BASE and PUSH". **OPENING WITH LIMITED RELEASE** (only during the electric pulse). Suitable for PVC, wooden and aluminium frames, both coplanar and with rebate up to 24 mm. Not suitable for fire doors.

Power supply **24V AC 15W.**

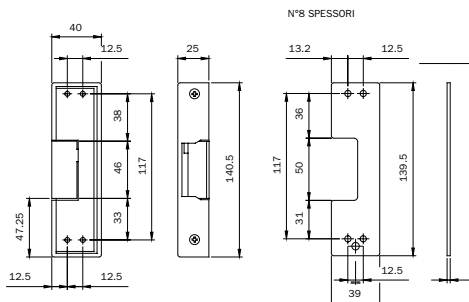
Painted black	5680020	D	1	-	1
Painted grey	5680023	D	1	-	1
Painted white	5680024	D	1	-	1



COVERING KIT FOR ELECTRIC STRIKER 56800*. Composed of: device cover and fixing plate.

Electric striker to be ordered separately.

PVD finish	5680012	D	1	-	1
------------	---------	---	---	---	---



Electric striker for **PUSH BAR** panic exit devices. **PERMANENT UNLATCHING AFTER ELECTRIC PULSE.** Not suitable for IDEA BASE and for fire doors.

Power supply **12V. AC 15W.**

Painted black.	5670000	D	1	-	1
----------------	---------	---	---	---	---