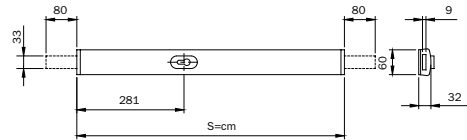




**Security
locks**

Code
Multiple
package
Single
package
Status
Min. ord.



To be used with cylinder
with projecting DIN cam

REVERSIBLE SECURITY BAR operating with European-profile cylinder. Horizontal fixing. Chrome-plated steel base and aluminium case. Single throw with latchbolts travel distance of mm. 80 **ON THE RIGHT AND ON THE LEFT.**
Pair of narrow-base rim strikers. One mortice striker. Internal black nylon cylinder escutcheon.
Assembly template. Fixing screws. Instructions sheet.

Door thickness L mm.	Code				
	C	D	*		
40	85	8**9	30	55	*
45	90	8**9	30	60	*
55	100	8**9	30	70	*
65	110	8**9	30	80	*

Bar (S) mm. 800

GOLD painted

904801 B 1 - 1

BRONZE painted

904802 B 1 - 1

WHITE painted

904804 A 1 - 1

Bar (S) mm. 850

GOLD painted

904851 C 1 - 1

BRONZE painted

904852 B 1 - 1

WHITE painted

904854 B 1 - 1

Bar (S) mm. 900

GOLD painted

904901 D 1 - 1

BRONZE painted

904902 B 1 - 1

WHITE painted

904904 A 1 - 1

Bar (S) mm. 970

GOLD painted

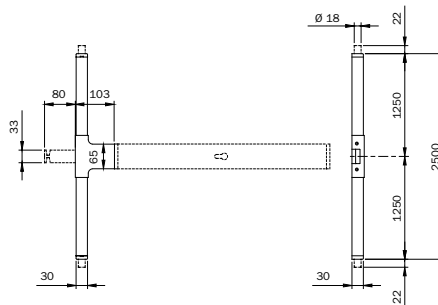
904971 D 1 - 1

BRONZE painted

904972 B 1 - 1

WHITE painted

904974 B 1 - 1



REVERSIBLE KIT FOR BARS SERIES 904. FOR USE WITH TOP/BOTTOM LOCKING.

For doors with a max. height of mm. 2500. Latchbolt travel range mm. 80. Rods travel range mm. 22.
Upper rim striker with spacers. Floor socket. Fixing screws.

GOLD painted

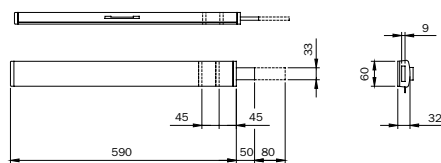
900011 D 1 - 1

BRONZE painted

900012 D 1 - 1

WHITE painted

900014 C 1 - 1



REVERSIBLE BAR FOR SECOND WING mm. 650, shortenable to mm. 600 or mm. 550.

Chrome-plated steel base and aluminium case. Latchbolt manual extension mm. 80.
Fixing screws. Instructions sheet.

GOLD painted

900001 D 1 - 1

BRONZE painted

900002 D 1 - 1

WHITE painted

900004 B 1 - 1

Code
Status
Single package
Multiple package
Min. ord.

Accessories



EXTERNAL PLATE WITH HOLE FOR EUROPEAN-PROFILE CYLINDER for bar series 904*. In zamak.

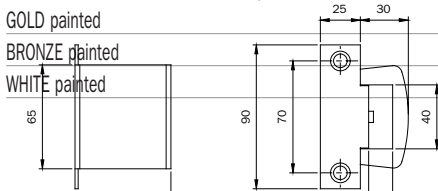
Inside fixing by screws.

CHROME plated	990901	D	1	-	1
GOLD painted	9909011	D	1	-	1
BRONZE painted	9909012	D	1	-	1
WHITE painted	9909014	D	1	-	1

EXTERNAL PLATE WITH ANTIDRILL DISK for bar series 904*. In stainless steel. Antidrill disk.

Antidrill balls for screws. Gasket. Adjustable escutcheon. Inside fixing by screws.

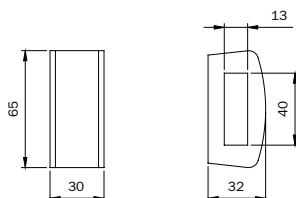
GOLD painted	990981	D	1	-	1
BRONZE painted	990982	D	1	-	1
WHITE painted	990984	D	1	-	1



NARROW-BASE STRIKER WITH BUILT-IN SLIDE GUARD for bar series 904*. Three spacers mm. 2.

Three spacers mm. 5. One nylon fork with one spacer. Screws.

GOLD painted case	990971	D	1	-	1
BRONZE painted case	990972	D	1	-	1
WHITE painted case	990974	D	1	-	1



PAIR OF LARGE-BASE STRIKERS WITH ADJUSTABLE BLADE for bar series 904*. Fixing screws.

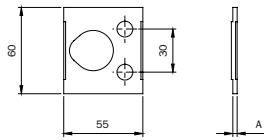
GOLD painted case	990911	D	1	-	1
BRONZE painted case	990912	D	1	-	1
WHITE painted case	990914	D	1	-	1

Code
Status
Multiple package
Single package
Min. ord.

Accessories

PAIR OF STANDARD NARROW-BASE STRIKERS for bar series 904*.

GOLD painted case	990931	D	1	-	1
BRONZE painted case	990932	D	1	-	1
WHITE painted case	990934	D	1	-	1



PAIR OF STRIKERS, TO BE WALLED, for bar series 904*. Nylon keep. CHROME-PLATED steel forend.

	990910	D	1	-	1
--	---------------	---	---	---	---

SPACER FOR LARGE-BASE STRIKER for bar series 904*.

In nylon mm. 2	990902	D	10	-	10
In nylon mm. 3	990903	D	10	-	10
In nylon mm. 6	990906	D	10	-	10

SPACER FOR NARROW-BASE STRIKER for bar series 904*.

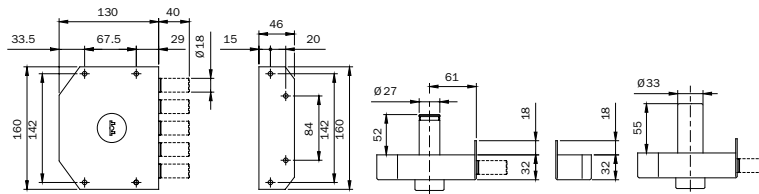
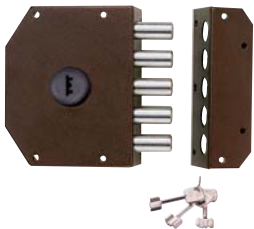
In CHROME-PLATED ABS mm. 2	990904	D	10	-	10
In CHROME-PLATED ABS mm. 5	990905	D	10	-	10

PAIR OF SPACERS FOR NARROW-BASE STRIKER for bar series 904*. In CHROME-PLATED zamak mm. 15.

	990930	D	10	-	10
--	---------------	---	----	---	----

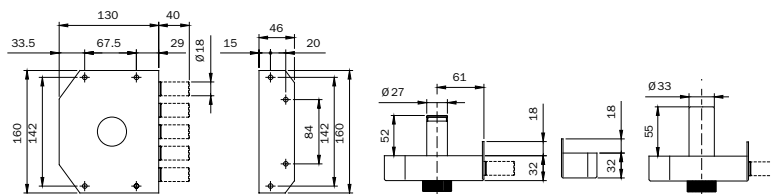
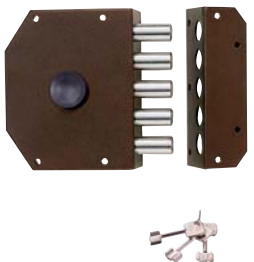
Code
Status
Multiple
package
Single
package
Min. ord.

Perfecta



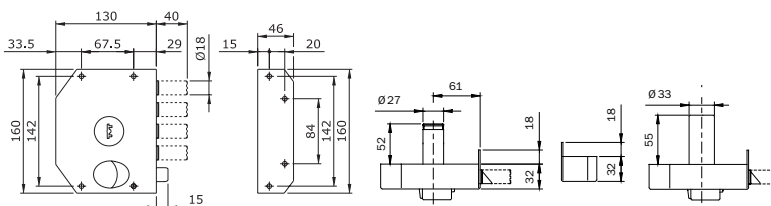
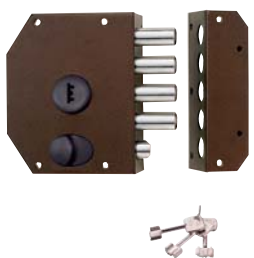
PERFECTA security rim lock. BRONZE painted. **LATERAL LOCKING** with 5 loading springs D mm. 18. Four mm. 10 throws. **INTERNAL KEY-GUIDE.**
3 PUMP KEYS. One ABS keyhead. Tear-resistant tube for cylinder D mm. 32.
 Brass painted escutcheon D mm. 32. Striker with blade. Fixing screws.
 RIGHT-HAND. External pump cylinder mm. 50
 RIGHT-HAND. External pump cylinder mm. 60
 LEFT-HAND. External pump cylinder mm. 50
 LEFT-HAND. External pump cylinder mm. 60

911005/D	C	1	-	1
911005/D.60	C	1	-	1
911005/S	C	1	-	1
911005/S.60	D	1	-	1



PERFECTA security rim lock. BRONZE painted. **LATERAL LOCKING** with 5 loading springs D mm. 18. Four mm. 10 throws. **INTERNAL KNOB.**
3 PUMP KEYS. One ABS keyhead. Tear-resistant tube for cylinder D mm. 32.
 Brass painted escutcheon D mm. 32. Striker with blade. Fixing screws.
 RIGHT-HAND. External pump cylinder mm. 50
 RIGHT-HAND. External pump cylinder mm. 60
 LEFT-HAND. External pump cylinder mm. 50
 LEFT-HAND. External pump cylinder mm. 60

911015/D	C	1	-	1
911015/D.60	D	1	-	1
911015/S	C	1	-	1
911015/S.60	D	1	-	1



PERFECTA security rim lock. BRONZE painted. **LATERAL LOCKING** with 5 loading springs D mm. 18 and deadbolt. Four mm. 10 throws. **INTERNAL KEY-GUIDE.**
DEADLOCKING BY KNOB INSIDE AND BY KEY OUTSIDE.
3 PUMP KEYS. One ABS keyhead. Tear-resistant tube for cylinder D mm. 32.
 Brass painted escutcheon D mm. 32. Striker with blade. Fixing screws.
 RIGHT-HAND. External pump cylinder mm. 50
 RIGHT-HAND. External pump cylinder mm. 60
 LEFT-HAND. External pump cylinder mm. 50
 LEFT-HAND. External pump cylinder mm. 60

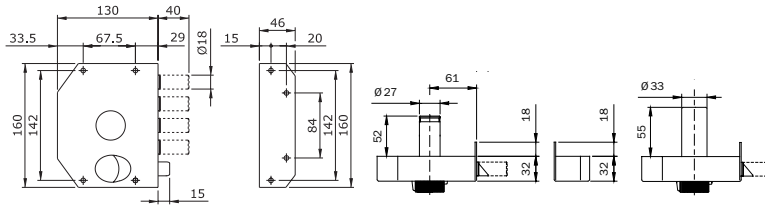
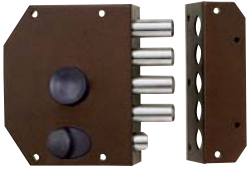
911105/D	B	1	-	1
911105/D.60	C	1	-	1
911105/S	C	1	-	1
911105/S.60	D	1	-	1

Code

Multiple
package
Single
package
Status

Min. ord.

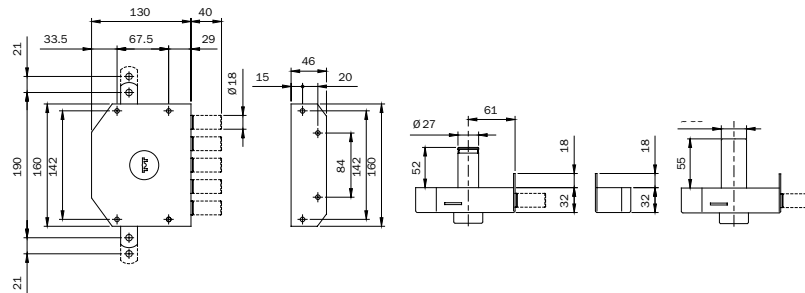
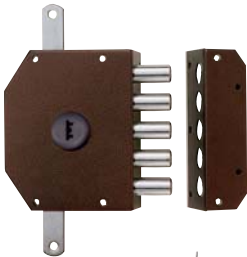
Perfecta



PERFECTA security rim lock. BRONZE painted. **LATERAL LOCKING** with 5 loading springs D mm. 18 and deadbolt. Four mm. 10 throws. **INTERNAL KNOB. DAEDLOCKING BY KNOB INSIDE AND BY KEY OUTSIDE. 3 PUMP KEYS.** One ABS keyhead.

Tear-resistant tube for cylinder D mm. 32. Brass painted escutcheon D mm. 32. Striker with blade. Fixing screws.

RIGHT-HAND. External pump cylinder mm. 50	911115/D	C	1	-	1
RIGHT-HAND. External pump cylinder mm. 60	911115/D.60	D	1	-	1
LEFT-HAND. External pump cylinder mm. 50	911115/S	D	1	-	1
LEFT-HAND. External pump cylinder mm. 60	911115/S.60	D	1	-	1



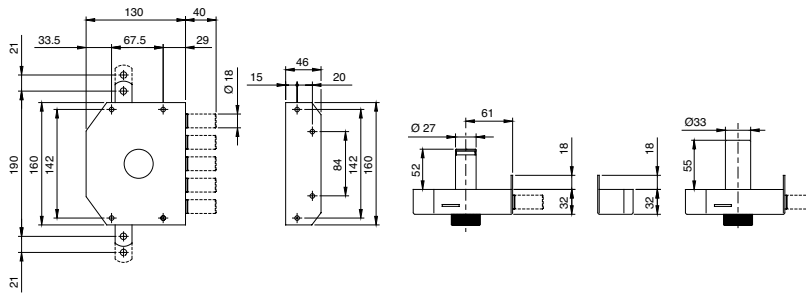
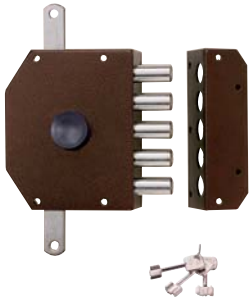
PERFECTA security rim lock. BRONZE painted. **3-POINT LOCKING.** Lateral locking with 5 loading springs D mm. 18. Four mm. 10 throws. Vertical locking with top/bottom with hole for rods connection, travel range mm. 21. **INTERNAL KEY-GUIDE.**

Two rod-guides. Projecting part mm. 35 for rods. Upper striker. Floor socket. **3 PUMP KEYS.** One ABS keyhead. Tear-resistant tube for cylinder D mm. 32. Brass painted escutcheon D mm. 32. Striker with blade. Fixing screws.

RIGHT-HAND. External pump cylinder mm. 50	913005/D	B	1	-	1
RIGHT-HAND. External pump cylinder mm. 60	913005/D.60	C	1	-	1
LEFT-HAND. External pump cylinder mm. 50	913005/S	B	1	-	1
LEFT-HAND. External pump cylinder mm. 60	913005/S.60	C	1	-	1

Code
Status
Single
package
Multiple
package
Min. ord.

Perfecta



PERFECTA security rim lock. BRONZE painted. **3-POINT LOCKING.**

Lateral locking with 5 loading springs D mm. 18. Four mm. 10 throws . Vertical locking A148with top/bottom with hole for rods connection, travel range mm. 21. Internal key-guide. **INTERNAL KNOB.** Two rod guides.

Projecting part mm. 35 for rods. Upper striker. Floor socket. **3 PUMP KEYS.**

One ABS keyhead. Tear-resistant tube for cylinder D mm. 32.

Brass painted escutcheon D mm. 32. Striker with blade. Fixing screws

RIGHT-HAND. External pump cylinder mm. 50

913015/D C 1 - 1

RIGHT-HAND. External pump cylinder mm. 60

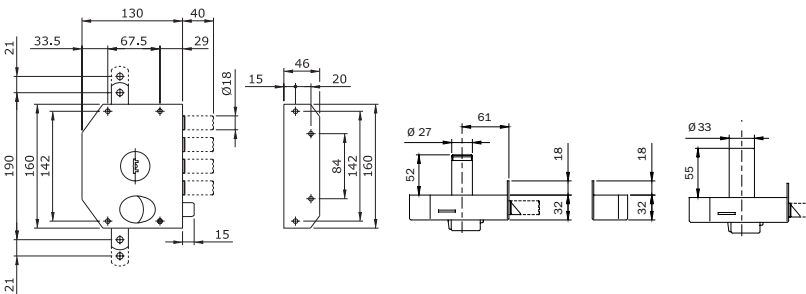
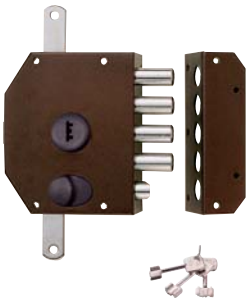
913015/D.60 C 1 - 1

LEFT-HAND. External pump cylinder mm. 50

913015/S C 1 - 1

LEFT-HAND. External pump cylinder mm. 60

913015/S.60 C 1 - 1



PERFECTA security rim lock. BRONZE painted. **3-POINT LOCKING.**

Lateral locking with 5 loading springs D mm. 18. Four mm. 10 throws. Vertical locking with top/bottom with hole for rods connection, travel range mm. 21. **INTERNAL KEY-GUIDE.**

DEADLOCKING BY KNOB INSIDE AND BY KEY OUTSIDE. Two key-guides. Projecting part mm. 35 for rods.

Upper striker. Floor socket. **3 PUMP KEYS.**

One ABS keyhead. Tear-resistant tube for cylinder D mm. 32.

Brass painted escutcheon D mm. 32. Striker with blade. Fixing screws.

RIGHT-HAND. External pump cylinder mm. 50

913105/D A 1 - 1

RIGHT-HAND. External pump cylinder mm. 60

913105/D.60 B 1 - 1

LEFT-HAND. External pump cylinder mm. 50

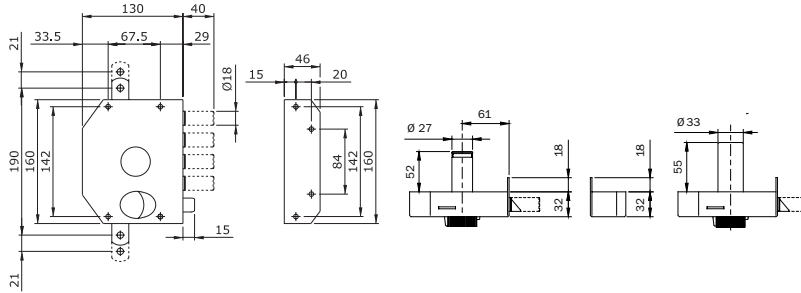
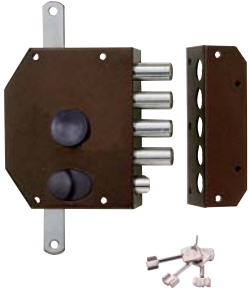
913105/S B 1 - 1

LEFT-HAND. External pump cylinder mm. 60

913105/S.60 C 1 - 1

Code
Multiple
package
Single
package
Status
Min. ord.

Perfecta



PERFECTA security rim lock. BRONZE painted. **3-POINT LOCKING.**

Lateral locking with 4 loading springs D mm. 18 and deadbolt. Four mm. 10 throws. Vertical locking with top/bottom with hole for rods connection, travel range mm. 21. **INTERNAL KNOB. DEADLOCKING BY**

KNOB FROM INSIDE AND BY KEY FROM OUTSIDE. Two key-guides. Projecting part mm. 35 for rods.

Upper striker. Floor socket. **3 PUMP KEYS.**

One ABS keyhead. Tear-resistant tube for cylinder D mm. 32.

Brass painted escutcheon D mm. 32. Striker with blade. Fixing screws.

RIGHT-HAND. External pump cylinder mm. 50

913115/D C 1 - 1

RIGHT-HAND. External pump cylinder mm. 60

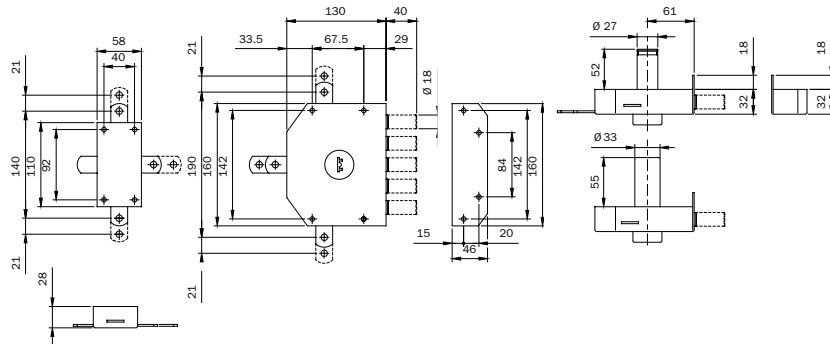
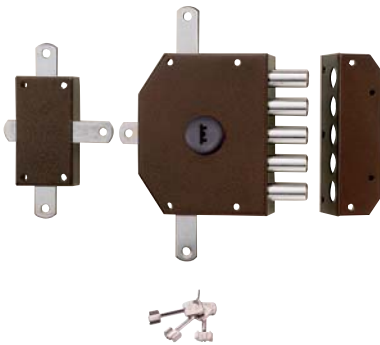
913115/D.60 C 1 - 1

LEFT-HAND. External pump cylinder mm. 50

913115/S C 1 - 1

LEFT-HAND. External pump cylinder mm. 60

913115/S.60 C 1 - 1



PERFECTA security rim lock. BRONZE painted. **5-POINT LOCKING.**

Lateral locking with 5 loading springs D mm. 18. Four mm. 10 throws. Vertical locking with back deviator and top/bottom with hole for rods connection, travel range mm. 21.

INTERNAL KEY-GUIDE. Four key-guides. Projecting part mm. 35 for rods.

Upper striker. Floor socket. **3 PUMP KEYS.**

One ABS keyhead. Tear-resistant tube for cylinder D mm. 32.

Brass painted escutcheon D mm. 32. Striker with blade. Fixing screws.

RIGHT-HAND. External pump cylinder mm. 50

915005/D C 1 - 1

RIGHT-HAND. External pump cylinder mm. 60

915005/D.60 C 1 - 1

LEFT-HAND. External pump cylinder mm. 50

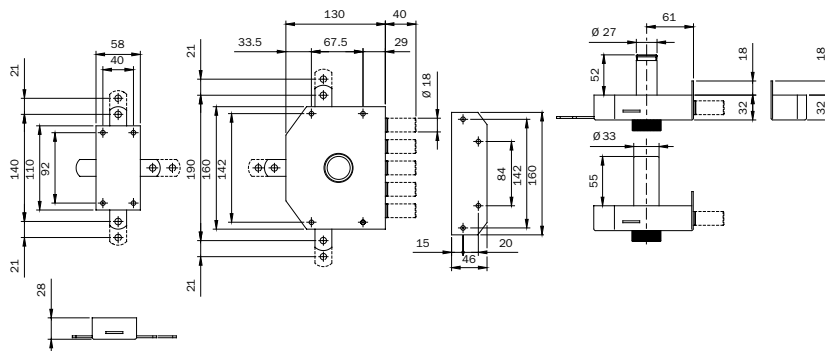
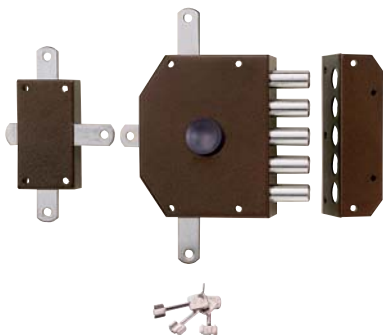
915005/S C 1 - 1

LEFT-HAND. External pump cylinder mm. 60

915005/S.60 D 1 - 1

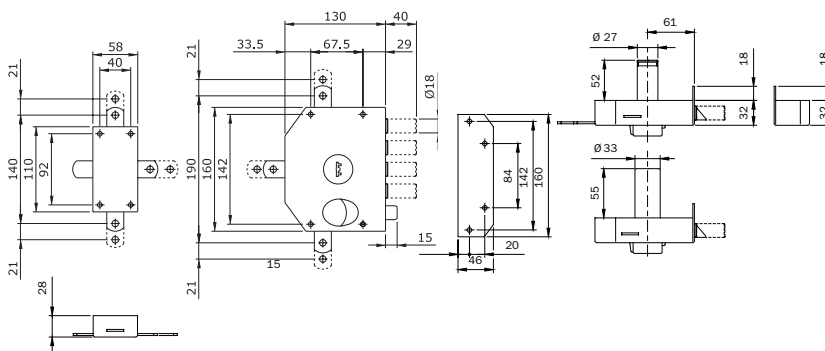
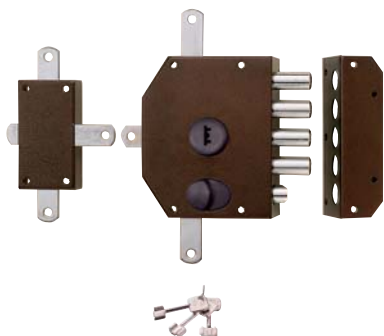
Code
Multiple
package
Single
package
Status
Min. ord.

Perfecta



PERFECTA security rim lock. BRONZE painted. **5-POINT LOCKING.**
Lateral locking with 5 loading springs D mm. 18. Four mm. 10 throws. Vertical locking with back deviator and top/bottom with hole for rods connection, travel range mm. 21. **INTERNAL KNOB.**
Four key-guides. Projecting part mm. 35 for rods.
Two upper strikers. Two floor sockets. **3 PUMP KEYS.**
One ABS keyhead. Tear-resistant tube for cylinder D mm. 32.
Brass painted escutcheon D mm. 32. Striker with blade. Fixing screws.

RIGHT-HAND. External pump cylinder mm. 50	915015/D	D	1	-	1
RIGHT-HAND. External pump cylinder mm. 60	915015/D.60	D	1	-	1
LEFT-HAND. External pump cylinder mm. 50	915015/S	D	1	-	1
LEFT-HAND. External pump cylinder mm. 60	915015/S.60	D	1	-	1

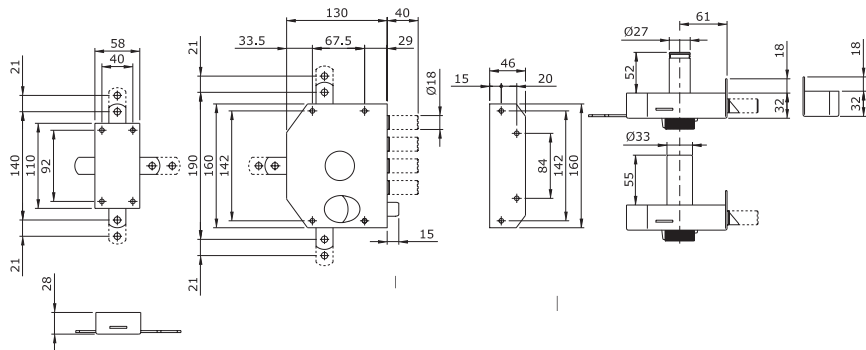
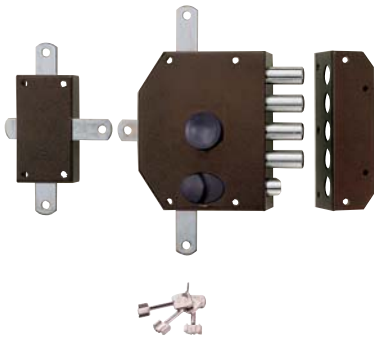


PERFECTA security rim lock. BRONZE painted. **5-POINT LOCKING.**
Lateral locking with 5 loading springs D mm. 18 and deadbolt. Four mm. 10 throws. Vertical locking with back deviator and top/bottom with hole for rods connection, travel range mm. 21.
INTERNAL KEY-GUIDE. DEADLOCKING BY KNOB FROM INSIDE AND BY KEY FROM OUTSIDE.
Four key-guides. Projecting part mm. 35 for rods. Two upper strikers.
Two floor sockets. **3 PUMP KEYS.** One ABS keyhead. Tear-resistant tube for cylinder D mm. 32.
Brass painted escutcheon D mm. 32. Striker with blade. Fixing screws.

RIGHT-HAND. External pump cylinder mm. 50	915105/D	C	1	-	1
RIGHT-HAND. External pump cylinder mm. 60	915105/D.60	D	1	-	1
LEFT-HAND. External pump cylinder mm. 50	915105/S	D	1	-	1
LEFT-HAND. External pump cylinder mm. 60	915105/S.60	D	1	-	1

Min. ord.
Multiple
package
Single
package
Status
Code

Perfecta



PERFECTA security rim lock. BRONZE painted. **5-POINT LOCKING.**

Lateral locking with 5 loading springs D mm. 18 and deadbolt. Four mm. 10 throws. Vertical locking with back deviator and top/bottom with hole for rods connection, travel range mm. 21.

INTERNAL KEY-GUIDE. DEADLOCKING BY KNOB FROM INSIDE AND BY KEY FROM OUTSIDE.

Four key-guides. Projecting part mm. 35 for rods. Two upper strikers.

Two floor sockets. **3 PUMP KEYS.** One ABS keyhead. Tear-resistant tube for cylinder D mm. 32.

Brass painted escutcheon D mm. 32. Striker with blade. Fixing screws.

RIGHT-HAND. External pump cylinder mm. 50

915115/D D 1 - 1

RIGHT-HAND. External pump cylinder mm. 60

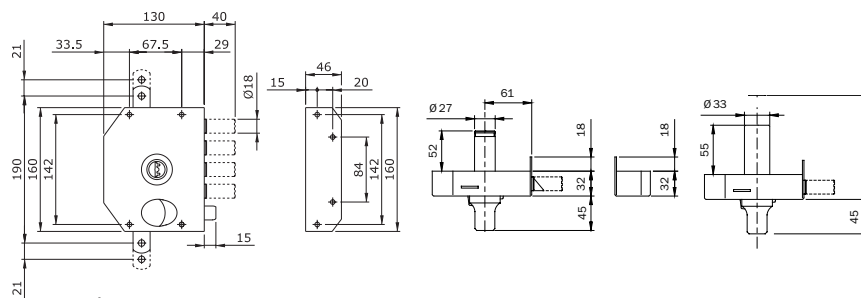
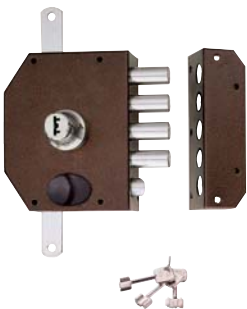
915115/D.60 D 1 - 1

LEFT-HAND. External pump cylinder mm. 50

915115/S D 1 - 1

LEFT-HAND. External pump cylinder mm. 60

915115/S.60 D 1 - 1



PERFECTA security rim lock. BRONZE painted. **3-POINT LOCKING.**

Lateral locking with 4 loading springs D mm. 18 and deadbolt. Four mm. 10 throws. Vertical locking with top/bottom with hole for rods connection, travel range mm. 21. Nickel-plated internal pump cylinder.

DEADLOCKING BY KNOB FROM INSIDE AND BY KEY FROM OUTSIDE. Two key-guides. Projecting part mm. 35 for rods.

Upper striker. Floor socket. **3 PUMP KEYS.**

One ABS keyhead. Tear-resistant tube for cylinder D mm. 32.

Brass painted escutcheon D mm. 32. Striker with blade. Fixing screws.

RIGHT-HAND. External pump cylinder mm. 50

913125/D A 1 - 1

RIGHT-HAND. External pump cylinder mm. 60

913125/D.60 D 1 - 1

LEFT-HAND. External pump cylinder mm. 50

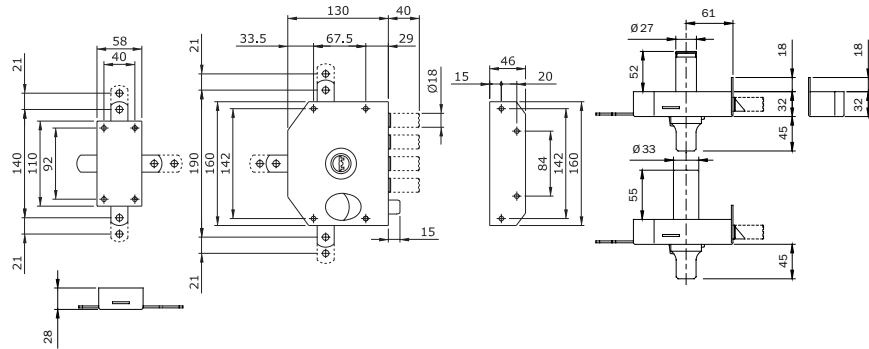
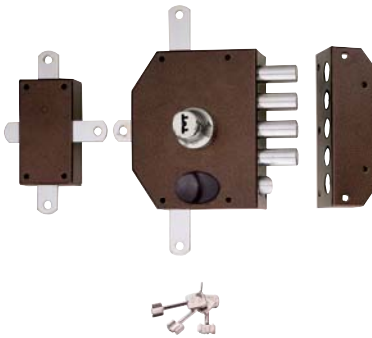
913125/S B 1 - 1

LEFT-HAND. External pump cylinder mm. 60

913125/S.60 D 1 - 1

Code
Multiple
package
Single
package
Status
Min. ord.

Perfecta



PERFECTA security rim lock. BRONZE painted. **5-POINT LOCKING.**

Lateral locking with 4 loading springs D mm. 18 and deadbolt. Four mm. 10 throws. Vertical locking with back deviator and top/bottom with hole for rods connection, travel range mm. 21.

NICKEL-PLATED INTERNAL PUMP CYLINDER. DEADLOCKING BY KNOB FROM INSIDE AND BY KEY FROM OUTSIDE.

Four key-guides. Projecting part mm. 35 for rods. Two upper strikers.

Two floor sockets. **3 PUMP KEYS.** One ABS keyhead. Tear-resistant tube for cylinder D mm. 32.

Brass painted escutcheon D mm. 32. Striker with blade. Fixing screws.

RIGHT-HAND. External pump cylinder mm. 50

915125/D B 1 - 1

RIGHT-HAND. External pump cylinder mm. 60

915125/D.60 D 1 - 1

LEFT-HAND. External pump cylinder mm. 50

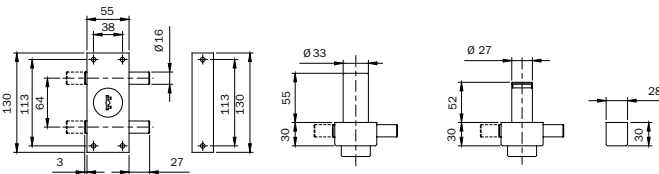
915125/S C 1 - 1

LEFT-HAND. External pump cylinder mm. 60

915125/S.60 D 1 - 1

Code
Multiple
package
Single
package
Status
Min. ord.

Vis



VIS reversible security rim lock. **LATERAL LOCKING** with 2 loading springs D mm. 16.

One mm. 27 throw. **INTERNAL KEY-GUIDE. 3 PUMP KEYS.**

One ABS keyhead. Tear-resistant tube for cylinder D mm. 32.

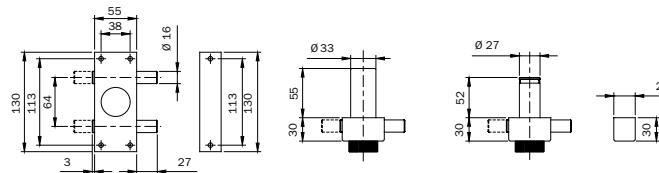
Brass painted escutcheon D mm. 32. Striker without blade. Fixing screws.

BRONZE painted. External pump cylinder mm. 50

910215 B 1 - 1

BRONZE painted. External pump cylinder mm. 60

910215...60 B 1 - 1



VIS reversible security rim lock. **LATERAL LOCKING** with 2 loading springs D mm. 16.

One mm. 27 throw. **INTERNAL KNOB. 3 PUMP KEYS.**

Tear-resistant tube for cylinder D mm. 32. Brass painted escutcheon D mm. 32.

Striker without blade. Fixing screws.

BRONZE painted. External pump cylinder mm. 50

910315 B 1 - 1

BRONZE painted. External pump cylinder mm. 60

910315...60 C 1 - 1

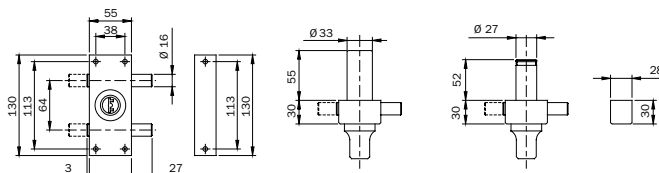


VIS reversible security rim lock. BRONZE painted. **LATERAL LOCKING** with 2 loading springs D mm. 16.

One mm. 27 throw. **INTERNAL KNOB. WITHOUT INTERNAL CYLINDER, WITHOUT KEYS.**

Striker without blade. Fixing screws.

9103150 D 1 - 1



VIS reversible security rim lock. **LATERAL LOCKING** with 2 loading springs D mm. 16.

One mm. 27 throw. **NICKEL-PLATED INTERNAL PUMP CYLINDER. 3 PUMP KEYS.**

One ABS keyhead. Tear-resistant tube for cylinder D mm. 32.

Brass painted escutcheon D mm. 32. Striker without blade. Fixing screws.

BRONZE painted. External pump cylinder mm. 50

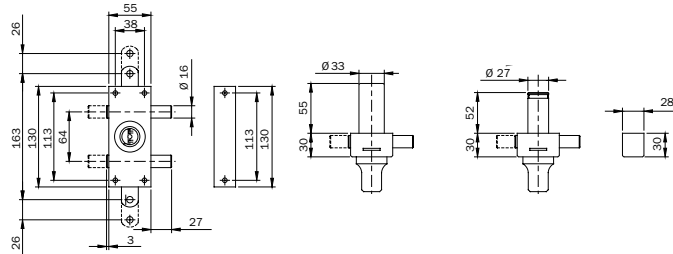
910415 C 1 - 1

BRONZE painted. External pump cylinder mm. 60

910415...60 D 1 - 1

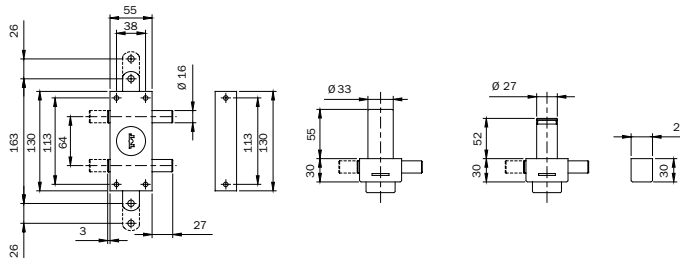
Code
Status
Multiple
package
Single
package
Min. ord.

Vis



VIS reversible security rim lock. **3-POINT LOCKING**. Lateral locking with 2 loading springs D mm. 16.
 One mm. 27 throw. Vertical locking with top/bottom hole for rods connection, travel range mm. 26. **NICKEL-PLATED INTERNAL PUMP CYLINDER**. Two key-guides. Projecting part mm. 35 for rods.
 Upper striker. Floor socket. **3 PUMP KEYS**.
 One ABS keyhead. Tear-resistant tube for cylinder D mm. 32.
 Brass painted escutcheon D mm. 32. Striker without blade. Fixing screws.
 BRONZE painted. External pump cylinder mm. 50
 BRONZE painted. External pump cylinder mm. 60

910435	B	1	-	1
910435...60	C	1	-	1

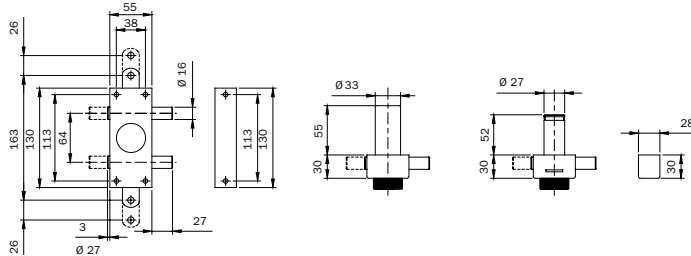


VIS reversible security rim lock. **3-POINT LOCKING**. Lateral locking with 2 loading springs D mm. 16.
 One mm. 27 throw. Vertical locking with top/bottom hole for rods connection, travel range mm. 26. **INTERNAL KEY-GUIDE**. Two key-guides. Projecting part mm. 35 for rods.
 Upper striker. Floor socket. **3 PUMP KEYS**.
 One ABS keyhead. Tear-resistant tube for cylinder D mm. 32.
 Brass painted escutcheon D mm. 32. Striker without blade. Fixing screws.
 BRONZE painted. External pump cylinder mm. 50
 BRONZE painted. External pump cylinder mm. 60
 BLACK painted. External pump cylinder mm. 50
 BLACK painted. External pump cylinder mm. 60

910235	A	1	-	1
910235...60	B	1	-	1
910235..N	B	1	-	1
910235..N60	D	1	-	1

Code
Multiple
package
Single
package
Status
Min. ord.

Vis



VIS reversible security rim lock. **3-POINT LOCKING**. Lateral locking with 2 loading springs D mm. 16.

One mm. 27 throw. Vertical locking with top/bottom hole for rods connection, travel range mm. 26. **INTERNAL KNOB**. Projecting part mm. 35 for rods.

3 PUMP KEYS. One ABS keyhead. Tear-resistant tube for cylinder D mm. 32.

Brass painted escutcheon D mm. 32. Striker without blade. Fixing screws.

BRONZE painted. External pump cylinder mm. 50

910335 A 1 - 1

BRONZE painted. External pump cylinder mm. 60

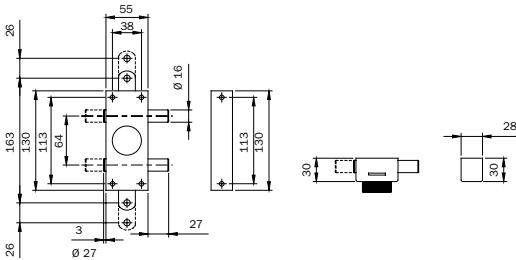
910335...60 A 1 - 1

BLACK painted. External pump cylinder mm. 50

910335..N B 1 - 1

BLACK painted. External pump cylinder mm. 60

910335..N60 B 1 - 1



VIS reversible security rim lock. **3-POINT LOCKING**. BRONZE painted. Lateral locking with 2 loading springs D mm. 16.

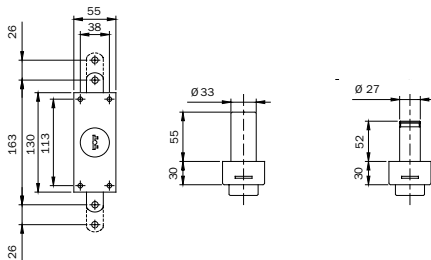
One mm. 27 throw. Vertical locking with top/bottom hole for rods connection,

travel range mm. 26. **INTERNAL KNOB. WITHOUT EXTERNAL CYLINDER, WITHOUT KEYS. TWO ROD GUIDES.**

Projecting part mm. 35 for rods. Upper striker. Floor socket. Striker without blade.

Fixing screws

9103350 C 1 - 1



Security rim lock. **2-POINT VERTICAL LOCKING. INTERNAL KEY-GUIDE**. Top/bottom,

hole for rods connection, travel range mm. 26. Two rod guides. Projecting part mm. 35 for rods.

Upper striker. Floor socket. **3 PUMP KEYS**. One ABS keyhead. Tear-resistant tube for cylinder D mm. 32.

Brass painted escutcheon D mm. 32. Striker without blade. Fixing screws.

BRONZE painted. External pump cylinder mm. 50

910205 A 1 - 1

BRONZE painted. External pump cylinder mm. 60

910205...60 B 1 - 1

BLACK painted. External pump cylinder mm. 50

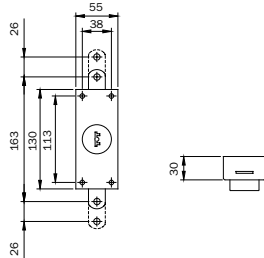
910205..N C 1 - 1

BLACK painted. External pump cylinder mm. 60

910205..N60 C 1 - 1

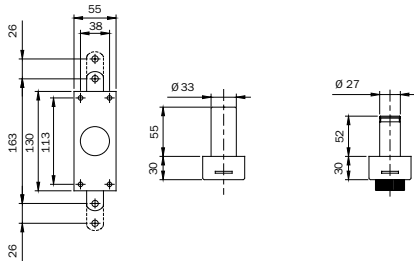
Code
Status
Multiple
package
Single
package
Min. ord.

Vis



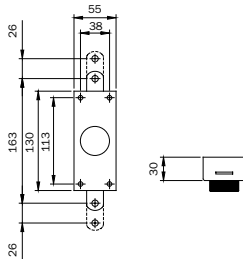
Security rim lock. **2-POINT VERTICAL LOCKING**. BRONZE painted.
INTERNAL KEY-GUIDE. WITHOUT EXTERNAL CYLINDER, WITHOUT KEYS. Top/bottom with hole
for rods connection, travel range mm. 26. Two rod guides. Projecting part mm. 35 for rods.
Upper striker. Floor socket. Fixing screws.

9102050 C 1 - 1



Security rim lock. **2-POINT VERTICAL LOCKING. INTERNAL KNOB.** Top/bottom with hole
for rods connection, travel range mm. 26. Two rod guides. Projecting part mm. 35 for rods.
Upper striker. Floor socket. **3 PUMP KEYS.** One ABS keyhead.
Tear-resistant tube for cylinder D mm. 32. Brass painted escutcheon D mm. 32. Fixing screws.
BRONZE painted. External pump cylinder mm. 50
BRONZE painted. External pump cylinder mm. 60
BLACK painted. External pump cylinder mm. 50
BLACK painted. External pump cylinder mm. 60

910305 A 1 - 1
910305..60 B 1 - 1
910305..N B 1 - 1
910305..N60 C 1 - 1

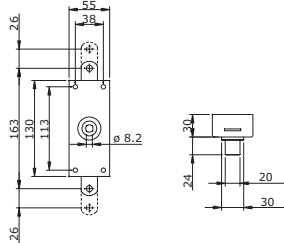


Security rim lock. **3-POINT VERTICAL LOCKING**. BRONZE painted.
INTERNAL KNOB. WITHOUT EXTERNAL CYLINDER, WITHOUT KEYS. Top/bottom with hole
for rods connection, travel range mm. 26. Two rod guides. Projecting part mm. 35 for rods. Upper striker.
Floor socket. Fixing screws

9103050 C 1 - 1

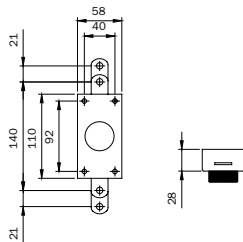
Code
Min. ord.
Multiple
package
Single
package
Status

Vis



Deviator for the second leaf. **2-POINT VERTICAL LOCKING. PREARRANGED FOR INTERNAL SELF-LOCKING KNOB.**
WITHOUT EXTERNAL CYLINDER, WITHOUT KEYS. Top/bottom with hole for rods connection, travel range mm. 21.
Two rod guides. Projecting part mm. 35 for rods. Upper striker. Floor socket. Fixing screws.
BRONZE painted

9103250 D 1 - 1



Security rim lock. **2-POINT VERTICAL LOCKING. INTERNAL SELF-LOCKING KNOB.**
WITHOUT EXTERNAL CYLINDER, WITHOUT KEYS. Top/bottom with hole for rods connection, travel range mm. 21.
Two rod guides. Projecting part mm. 35 for rods. Upper striker. Floor socket. Fixing screws.
BRONZE painted
BLACK painted

910105 B 1 - 1

910105.N D 1 - 1



LOCK FOR SAFE, double-bit, 6 levers, with double-coded key.
Locking by two lateral latchbolts.
Locking by two lateral and two vertical latchbolts.
Locking by three lateral and two vertical latchbolts.

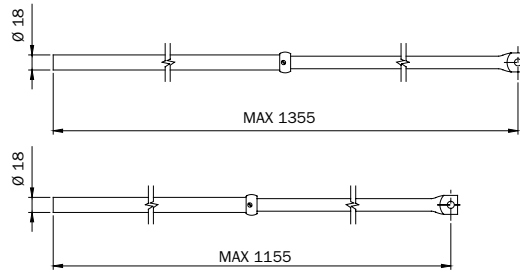
959002 D 1 - 1

959004 D 1 - 1

959005 D 1 - 1

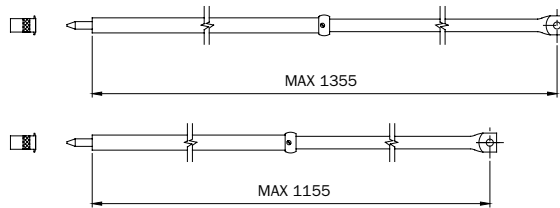
Code
Status
Multiple package
Single package
Min. ord.

Accessories



PAIR OF SPACERS FOR NARROW-BASE STRIKER for bar series 904*. One in CHROME-PLATED steel mm. 1,3.
One in CHROME-PLATED zamak mm. 15

990929 B 10 - 10



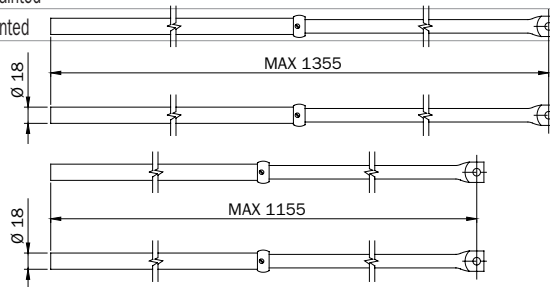
Pair of telescopic rods for 3-point security locks PERFECTA series 910-913. Tip D 18.
Rings with screw supplied.

BRONZE painted

990063 A 1 - 1

BLACK painted

990063..N C 1 - 1



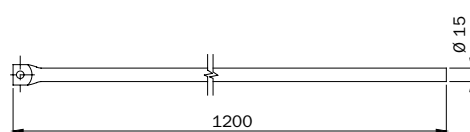
Pair of telescopic rods for 3-point security locks PERFECTA series 910-913. Tip D 9.
Rings with screw supplied. Two antidust bushes.

BRONZE painted

990063.RB A 1 - 1

BLACK painted

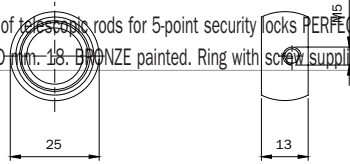
990063.RBN A 1 - 1



Code
Status
Multiple
package
Single
package
Min. ord.

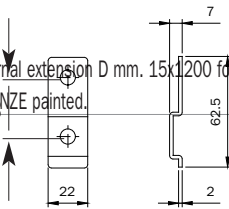
Accessories

Pair of telescopic rods for 5-point security locks PERFECTA series 915.
Tip D mm. 18. BRONZE painted. Ring with screw supplied.



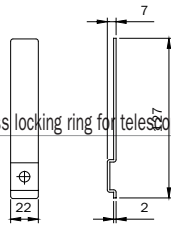
990067 B 1 - 1

Internal extension D mm. 15x1200 for rods series 990063-990067 for doors with a height of mm. 3200.
BRONZE painted.



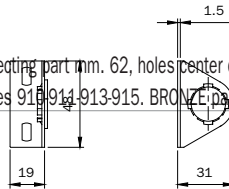
990122 C 1 - 1

Brass locking ring for telescopic rods series 990063-990067. Fixing screws.



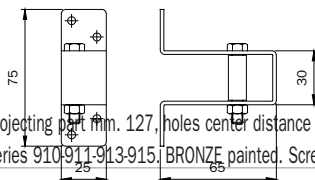
990123 C 10 - 10

Projecting part mm. 62, holes center distance mm. 35 for rods, for PERFECTA security locks series 910-913-915. BRONZE painted. Screw and nut.



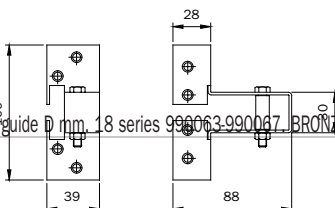
990049 D 10 - 10

Projecting part mm. 127, holes center distance up to 100 mm. for rods, for PERFECTA security locks series 910-913-915. BRONZE painted. Screw and nut.



990053 D 10 - 10

Rod guide D mm. 18 series 990063-990067. BRONZE painted.



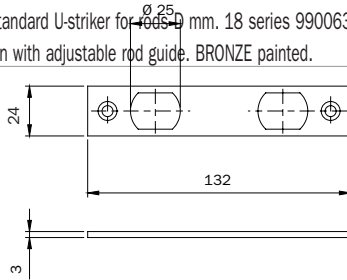
990099 D 10 - 10

Code
Status
Multiple package
Single package
Min. ord.

Accessories

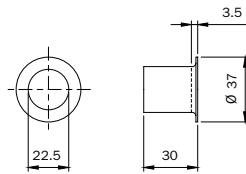
Standard U-striker for rods \varnothing mm. 18 series 990063-990067.
Pin with adjustable rod guide. BRONZE painted.

990103 D 5 - 5



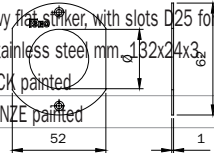
Angle upper U-striker with blades for rods D mm. 18 series 990063-990067.
Pin with adjustable rod guide. BRONZE painted.

990108 D 5 - 5



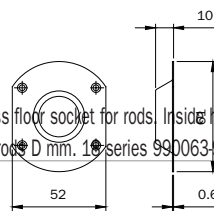
Heavy flat striker, with slots \varnothing 25 for latchbolts, for VIS locks series 910.
In stainless steel mm 132x24x3
BLACK painted
BRONZE painted

032080 B 10 - 10
032085 D 10 - 10



Brass floor socket for rods. Inside hole D mm. 22,5.
For rods D mm. 18 series 990063-990067.

990094 D 10 - 10



Nickel-plated brass flat escutcheon for pump cylinder, cylinder hole D mm. 27.

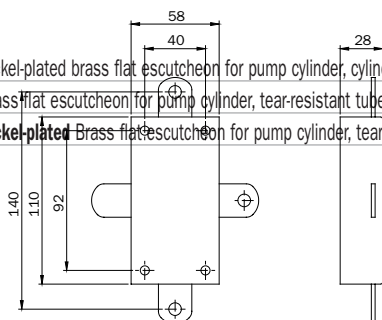
990084 D 10 - 10

Brass flat escutcheon for pump cylinder, tear-resistant tube hole D mm. 33.

990086 C 10 - 10

Nickel-plated Brass flat escutcheon for pump cylinder, tear-resistant tube hole D mm. 33.

990083 C 10 - 10



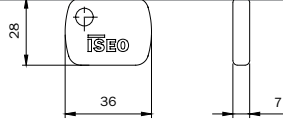
Concave brass escutcheon for pump cylinder, cylinder hole D mm. 27.

990090 D 10 - 10

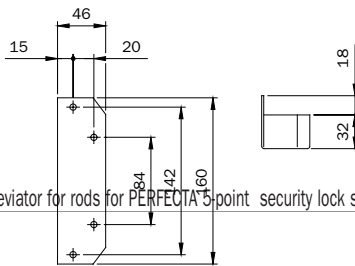
Code
Status
Single package
Multiple package
Min. ord.

Accessories

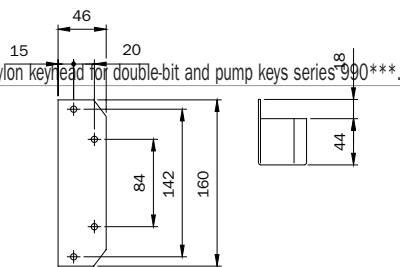
Convex brass escutcheon for pump cylinder, cylinder hole D mm. 27.	990090/C	D	10	-	10
--	----------	---	----	---	----



Deviator for rods for PERFECTA 5-point security lock series 915. BRONZE painted.	990075	D	1	-	1
--	--------	---	---	---	---



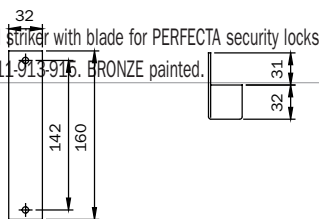
Nylon keyhead for double-bit and pump keys series 990***.	990000	D	10	-	10
---	--------	---	----	---	----



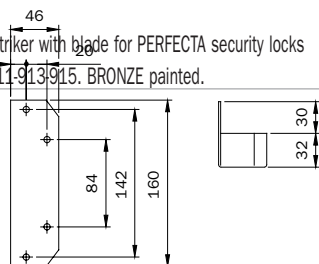
new



Standard striker with blade for PERFECTA security locks series 911-913-915. BRONZE painted.	990033	D	1	-	1
---	--------	---	---	---	---



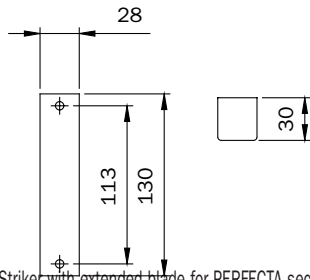
Raised striker with blade for PERFECTA security locks series 911-913-915. BRONZE painted.	990037	D	1	-	1
---	--------	---	---	---	---



Striker reduced to 28x156 mm, raised with blade, for PERFECTA security locks series 911-913-915. BRONZE painted.	990038	D	1	-	1
--	--------	---	---	---	---

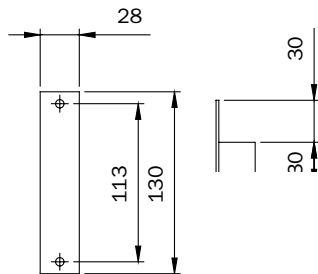
Code
Multiple
package
Single
package
Status
Min. ord.

Accessories



Striker with extended blade for PERFECTA security locks series 911-913-915. BRONZE painted.

990254 D 1 - 1



Standard striker without blade for VIS security locks series 910. BRONZE painted.

990275 D 1 - 1

Striker with extended blade mm. 30 for VIS security locks series 910. BRONZE painted.

990295 D 1 - 1